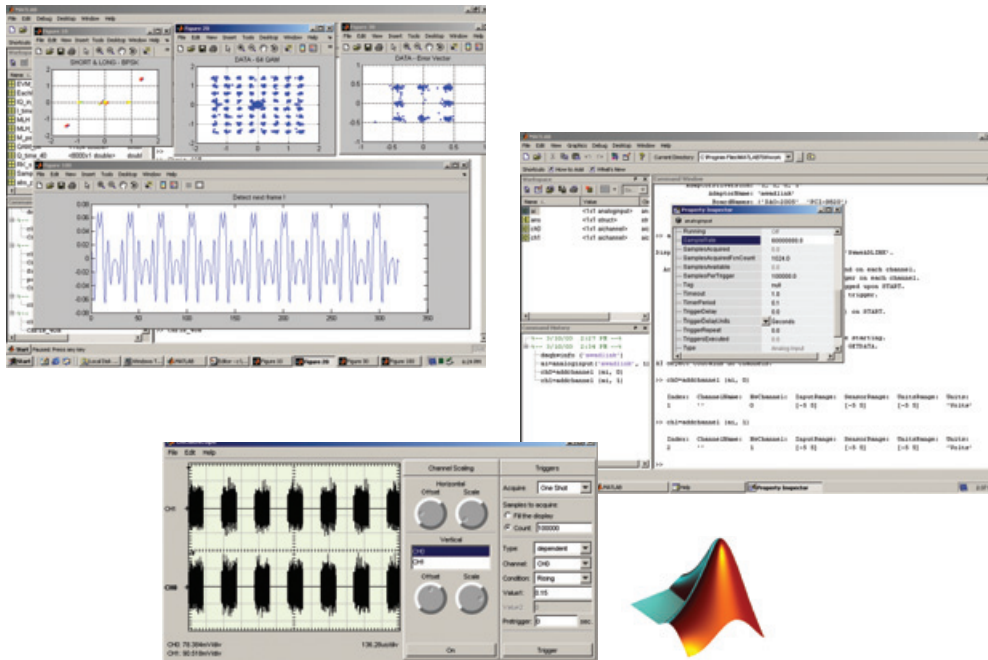


DAQ-MTLB

MATLAB® Data Acquisition Toolbox Adapter for ADLINK Data Acquisition Cards



Features

- MATLAB® Data Acquisition Toolbox 2.2 (or above) compliant
- Access live, measured data directly in MATLAB®
- Provides 100kS/s to 65MS/s, 12-bit to 16-bit data acquisition capability
- Supports a full range of ADLINK data acquisition cards
- Provides complete hardware trigger capability
- Supports analog input, analog output, and digital I/O

What is MATLAB® & DAQ Toolbox?

MATLAB® is a high-level technical computing language and interactive environment for algorithm development, data visualization, data analysis, and numeric computation. MATLAB can be used in a wide range of applications, including signal and image processing, communications, control design, test and measurement, financial modeling and analysis, and computational biology.

Data Acquisition Toolbox is one of MATLAB's most extensive Toolbox interfaces, providing a universal command set for performing analog input, analog output, and digital I/O from a variety of data acquisition devices. The DAQ Toolbox allows user-configurable external hardware devices to acquire live waveforms and output the data within a single, integrated MATLAB environment.

Introduction

DAQ-MTLB® Adapter is a standard MATLAB® Data Acquisition Toolbox Adaptor driver supporting the entire line of data acquisition cards from ADLINK. DAQ-MTLB is based on the open and extensible MATLAB DAQ Toolbox technology as the groundwork for driver development. It allows easy access to data acquisition devices in the integrated MATLAB® environment to perform online data acquisition and analysis.

Benefits for Using DAQ-MTLB

DAQ-MTLB provides users with a seamless interface to ADLINK data acquisition cards and allows users to access live data for run-time analysis and visualization in MATLAB®.

For experienced DAQ Toolbox users, all techniques on hand can be leveraged to program ADLINK cards. For users not familiar with DAQ Toolbox, samples and a user's guide are included with the DAQ-MTLB to clearly describe DAQ Toolbox commands.

ADLINK DAQ-MTLB supports the entire line of ADLINK data acquisition products, giving a great flexibility in choose DAQ devices from 12-bit to 16-bit resolution, 100kS/s to 65MS/s sampling rate. With DAQ-MTLB, MATLAB users can now have more powerful hardware support for developing measurement and analysis systems.

Hardware Support

■ NuDAQ PCI/cPCI Series

6208, 6216, 6308, 7200, 7224, 7230, 7233, 7234, 7248, 7250, 7256, 7258, 7260, 7296, 7300, 7348, 7396, 7432, 7433, 7434, 7452, 9111, 9112, 9113, 9114, 9118, 9810, 9812, 9820

■ DAQ-2000/PXI-2000 Series

2005, 2006, 2010, 2016, 2204, 2205, 2206, 2208, 2213, 2214, 2501, 2502

Free Download!

Please visit <http://www.adlinktech.com> and search for

■ DAQ-MTLB

MATLAB® Data Acquisition Toolbox Adapter for ADLINK data acquisition cards

MATLAB® is a trademark of The MathWorks, Inc.