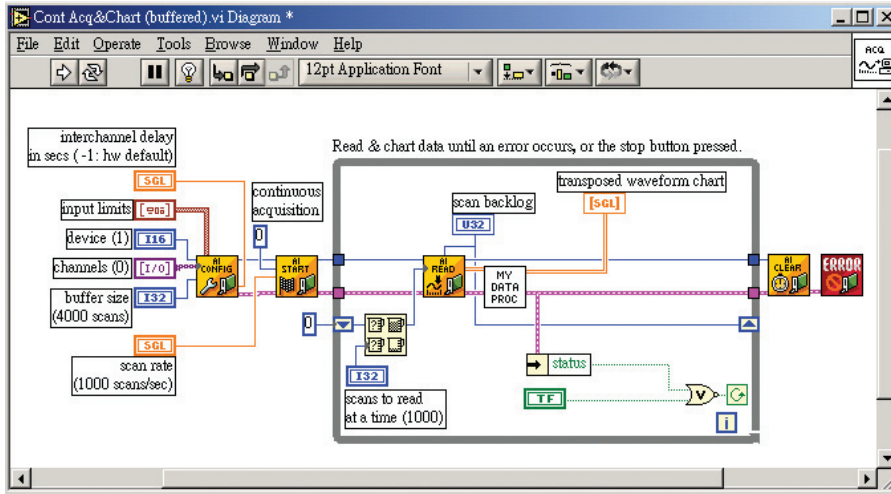


DAQ-LVIEW PnP for LabVIEW®

LabVIEW® Data Acquisition VI Set for ADLINK Data Acquisition Cards



Features

- LabVIEW®-compliant VIs for data acquisition
- Supports a full range of ADLINK data acquisition cards
- Drop-in replacement for NI-DAQ VIs
- Supports complete hardware capabilities of ADLINK data acquisition cards
- Supports Windows 98/NT/2000/XP
- Ample LabVIEW example programs provided

What is LabVIEW®?

National Instruments® LabVIEW® is an industry-leading software tool for developing measurement, test and control applications. For years, thousands of engineers and scientists have been using LabVIEW®'s powerful graphical programming environment and its built-in data acquisition, analysis, and presentation functions to shorten the design period and increase productivity.

As an open developing environment, LabVIEW® allows users to integrate any third-party hardware into measurement and control applications. With standard VI interfaces, hardware such as data acquisition cards, image capture cards and motion control cards from various vendors can be easily used in LabVIEW®. Users can take advantage of both the powerful LabVIEW® environment and great flexibility in hardware selection.

Introduction

DAQ-LVIEW PnP is a set of LabVIEW® DAQ VIs that supports a full range of ADLINK data acquisition cards. Based on the concept of virtual instruments, users can easily program an operation of analog input, analog output, digital I/O, or timer/counter using DAQ-LVIEW PnP VIs. Each VI has the identical interface with NI DAQ VI in basic, intermediate, and advanced I/O modes. Users familiar with LabVIEW® and National Instrument®'s DAQ devices can easily program ADLINK devices as these VIs follow the exact same programming methodology. All existing LabVIEW® programs can be easily modified within few minutes by removing the original VIs and plugging in DAQ-LVIEW PnP VIs. With DAQ-LVIEW PnP driver, users can take advantage of LabVIEW®'s powerful graphical programming capability as well as the excellent price/performance ratio brought by ADLINK data acquisition cards.

Compatibility with LabVIEW®

The DAQ-LVIEW PnP was designed within the LabVIEW® 7.0 environment, and has been tested for compatibility under different versions. You can use DAQ-LVIEW PnP in the following versions of LabVIEW®:

- LabVIEW® 6.5
- LabVIEW® 7.0
- LabVIEW® 7.1
- LabVIEW® 8.0

Hardware Support

■ NuDAQ PCI/cPCI Series

6208, 6216, 6308, 7200, 7224, 7230, 7233, 7234, 7248, 7250, 7256, 7258, 7260, 7296, 7300, 7348, 7396, 7432, 7433, 7434, 7452, 8554, 9111, 9112, 9113, 9114, 9118, 9810, 9812, 9820

■ DAQ-2000/PXI-2000 Series

2005, 2006, 2010, 2016, 2204, 2205, 2206, 2208, 2213, 2214, 2501, 2502

Free Download!

Please visit <http://www.adlinktech.com> and search for

■ **DAQ-LVIEW PnP**
LabVIEW® Data Acquisition VI Set for ADLINK Data Acquisition Cards

National Instruments and LabVIEW are trademarks of National Instruments Inc.

1

Software Solutions

2

PXI/ CompactPCI Platforms

3

PXI-Based Instruments

4

PXI/ CompactPCI Modules

5

PCI DAQ Cards

6

PCI DIO Cards

7

PC/ 104-Plus Products

8

ISA DAS/ DIO Cards

9

Wiring Termination Boards

10

Motion Vision & COM

11

Remote I/O Modules

12

Industrial Computers